

TABØR

build guide (≥1.6)

difficulty: ☆¹



Hi fellow!

Just a quick intro before starting,

what to have on hand

1. Soldering Iron - better with temperature control
2. Solder wire
3. A pair of tweezers
4. Multimeter
5. Cutter
6. Solder sucker / wick (optional)
7. Silicone soldering mat (optional)
8. Helping hands (optional)
9. Flux (optional)

If you want to refresh yourself a bit about soldering stuff you can watch [this video](#)² by GreatScott!

A tool that can help you placing the components on the boards is the interactive bill of materials.

Download the .html *ibom* file and open it with a browser. You can use it to check where a component is located on the board.

Once downloaded it works fine also offline.



Here are listed all the TABØR components, most of them are already pre-soldered on the board. We just need to solder the through hole ones (THT).

BE CAREFULL NOT TO TOUCH THE SMD COMPONENTS WHILE SOLDERING THE THT ONES.

It's really easy to lose a tiny smd resistor or capacitor. Be careful when soldering parts that are close to others already in place.

now let's begin starting from the bottom layer.

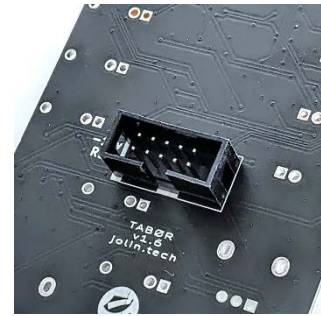
¹ 1/5-star modules are a good choice for a beginner. Even as first ever DIY.

² <https://www.youtube.com/watch?v=VxMV6wGS3NY>

eurorack power socket

Place the socket matching the drawing on the PCB. Be careful with the notch direction.

tip: solder one pin and check. If the socket is aligned with the PCB solder all the other pins.



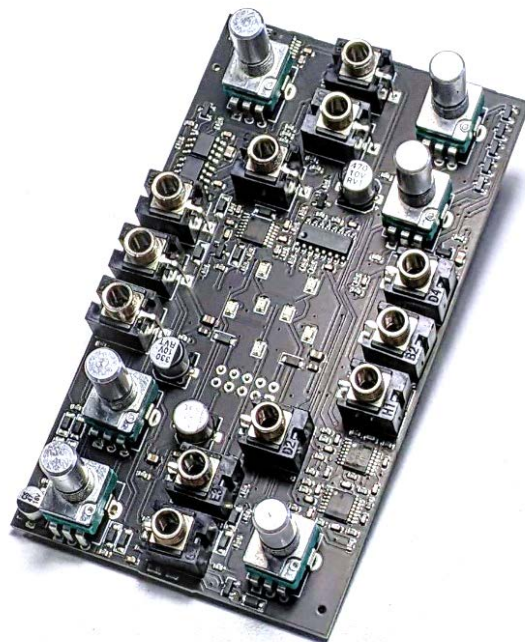
1	J1	EURORACK_HEADER
---	----	-----------------

now flip the board (front layer):

front panel components

Wait to solder them: just place all of them in the right place and move to the next step.

4	1F1, 2F1, 2M1, 1M1	50k (6.35mm round shaft)
2	4F1, 4M1	10k (6.35mm round shaft)
12	J2, J3, J4, J5, J6, J7, J8, J9, J10, J11, J12, J13	PJ398SM aka "Thonkiconn"



At last, put the panel on - check its direction - tighten the nuts.

Then solder all the front panel components.

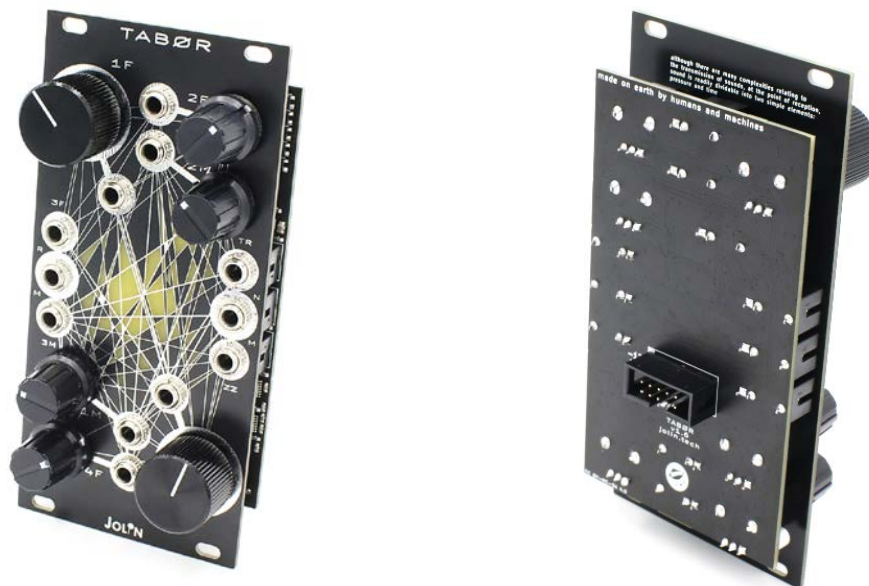
tip: we are soldering them now to ensure that all the mechanical parts are aligned with the panel.

before powering it up

- Check the power header for shorts with a multimeter.
tip: follow [this tutorial](#)³ by Quincas Moreira - aka SynthDiyGuy if you have any doubts on how to perform this procedure.
- Mind the polarity on the header socket of your PSU, **remember that red line is -12v**

How to check if the TABØR is doing its things properly?

- Play a bit with the knobs until you are sure that all the 7 LEDs light up correctly
- Blue LEDs are on regardless of the RM input
- All the three outputs are working (play with the knobs if the TR out is silent)



done! enjoy your newborn

TABØR

find us:

web ⇒ www.jolin.tech

e-mail ⇒ info@jolin.tech

build group ⇒ [JolinLab - STUFF](#)

Instagram ⇒ [@jolinlab](#)

Youtube ⇒ [▶](#)

³ <https://www.youtube.com/watch?v=qS0SoliiQCo>